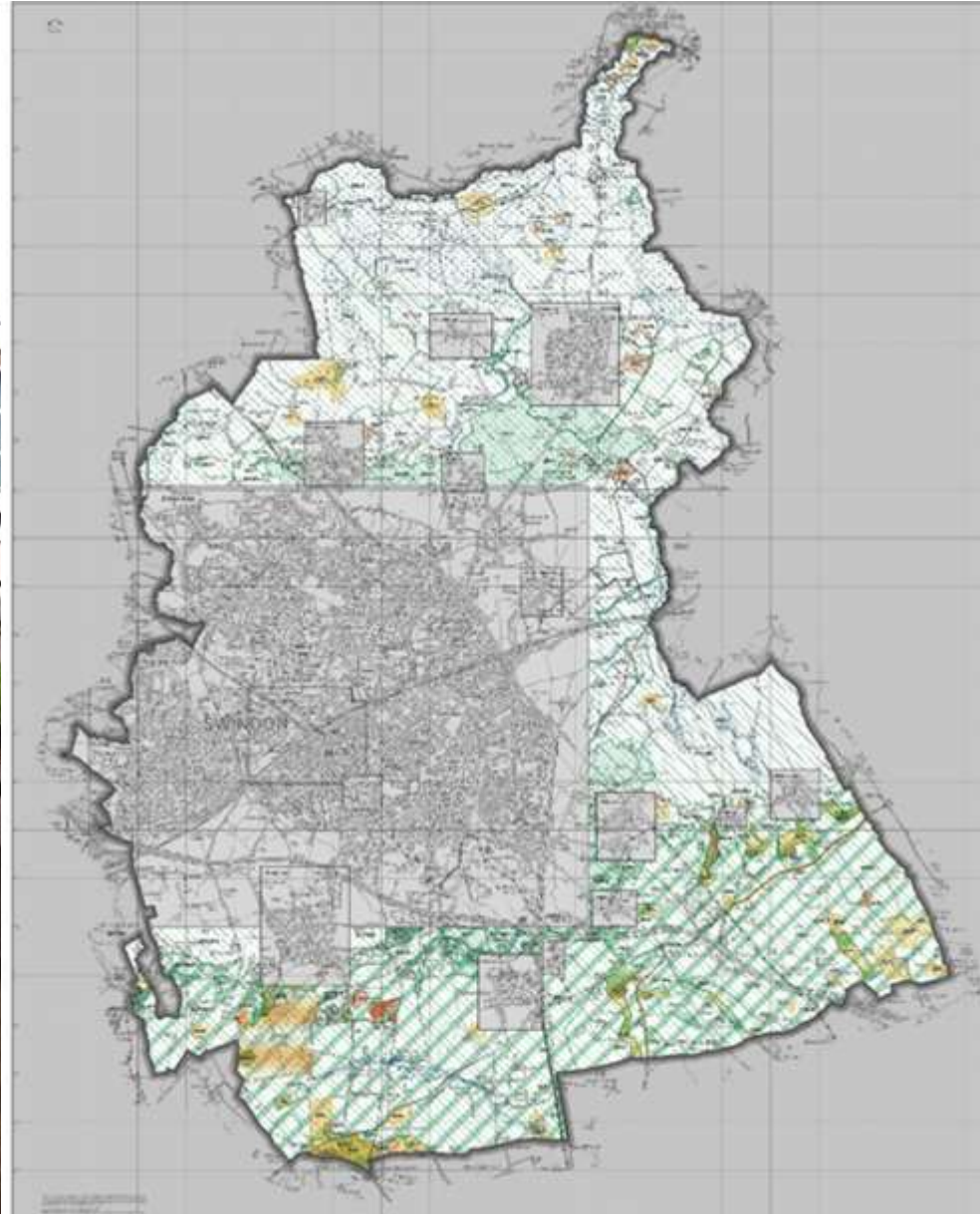


Swindon's Archaeology in Context: Engaging the Public in Collections Management Work

Stefanie Vincent
Museum Collections Project Manager
Swindon Museum and Art Gallery
@StefanieSV @MuseumandArt





Hidden Potential 2014-16

Understanding, Centralising, Caring for and Sharing Swindon's Stored Collections



Swindon's Archaeology in Context

Excavating our archaeological collections and sharing Swindon's ancient histories

Project cost £91,600, HLF contribution was £80,100

- One of SM&AG's largest collections
- One of the least understood collections
- Poorly provenanced collection
- One of the most diverse collections
- Likely to grow significantly in the next 5-7 years
- National conversation about the future of archaeology and the role of museums

Swindon's Archaeology in Context

Excavating our archaeological collections and sharing Swindon's ancient histories

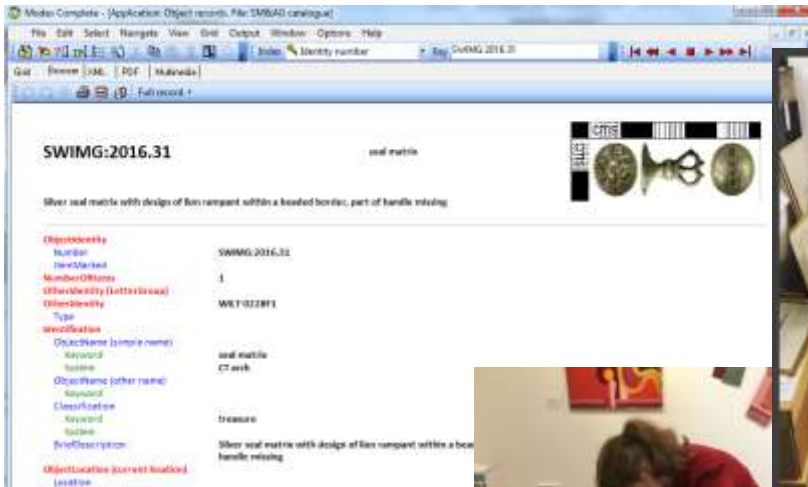
Standard Issues

- Early museum acquisitions with low levels of information attached
- Pre-planning archaeological archives; ownership and funding
- Changing standards of archaeological excavations and archiving
- Space!
- Use of existing archives

Specific Issues

- Archives physically split up
- Undocumented access and loans
- No overall knowledge of contents of collection
- Unsuitable storage of archives

Social Media Sharing



Volunteering as Engagement



Do-it for good

You are signed in as **Stefanie Vincent** Your Do-it

[Start volunteering](#) [Find volunteers](#) [Search organisations](#) [News & Campaigns](#) [Find a job](#) [Post a job](#)

Home / Start Volunteering / Collections Volunteer - Local Art Project

Collections Volunteer - Local Art Project

 Swindon Museum and Art Gallery
Swindon SN1 4BA
Posted 13/4/2018
Places available: 3

[Save for later](#) [Print](#)

About the opportunity

Swindon Museum and Art Gallery is checking through all our stored objects, for the benefit of current and future visitors. This project focuses on our local art collection, which contains works by Swindon artists and artistic depictions of Swindon.

Working in a small team, volunteers will document and photograph works of art, carry out condition checking, then clean and appropriately pack works for storage. There is potential for this work to lead to an exhibition of our local art collection. This work means that this collection will be better understood and protected for future generations to enjoy.

Listed by:

Swindon Museum and Art Gallery
[Un-subscribe](#)

For:

Swindon Museum and Art Gallery



Volunteer Centre
Swindon

Volunteering as Engagement



Kids in
Museums




young
archaeologists'
club



BATH
SPA
UNIVERSITY

Cranfield
UNIVERSITY

Supported by
 **The National Lottery**[®]
through the Heritage Lottery Fund

 heritage
lottery fund

Official Chit chat.....

Cranfield
UNIVERSITY



South West
Museum
Development
Programme



Top Tips

- Make time to communicate
- Chit chat counts
- Don't reinvent the wheel
- Parts of your job are boring; still tell people
- Repeat yourself as needed
- A great instagram filter always helps!